



PRIME ENTERPRISE HOLDINGS PTY LTD/ PRIME CATERING PTY LTD Product Catalogue



Prices inclusive of GST

Standard Size - Standard Sushi, Brown Rice Sushi & Reverse Sushi in:

- Cooked Tuna with Cucumber (Gluten Free available)
- Teriyaki Chicken with Cucumber (Gluten Free available)
- Katsu Chicken with Cucumber
- California
- Vegetable (Gluten Free available)
- Smoked Salmon (Gluten Free available)
- Combination
- Prawn Katsu with Cucumber
- Cooked Prawn with Cucumber (Gluten Free available)
- California Beef
- Teriyaki Beef with Cucumber
- Premium Chicken Breast with Cucumber Gluten Free
- Vegan (Gluten Free available)
- Spicy Cooked Tuna
- Cooked Tuna with Avocado (Gluten Free available)
- Teriyaki Chicken with Avocado (Gluten Free available)
- Katsu Chicken with Avocado
- Smoked Salmon with Avocado (Gluten Free available)
- Combination with Avocado
- Prawn Katsu with Avocado
- Cooked Prawn with Avocado (Gluten Free available)
- Teriyaki Beef with Avocado
- Spicy Cooked Tuna with Avocado
- Vegetable with Tofu (Tofu, Avocado, Carrot, Beetroot)
- California Smoked Salmon
- Smoked Salmon with Cream Cheese & Avocado
- Hoisin Duck with Avocado

4 Pieces 5 Pieces 6 Pieces 8 Pieces 10 Pieces Hand Roll



Temaki

- Cooked Tuna
- TY Chicken
- Octopus
- Vegetable
- Smoked Salmon



Onigiri (Rice Ball)

- Cooked Tuna **GF
- Teriyaki Chicken **GF
- Plain **GF
- Vege. (Inari & Carrot)

GF** Gluten Free available



Japanese Soba Noodle in Small 220g & Regular 370g

- Cooked Tuna
- TY Chicken
- Crab Stick
- TY Beef



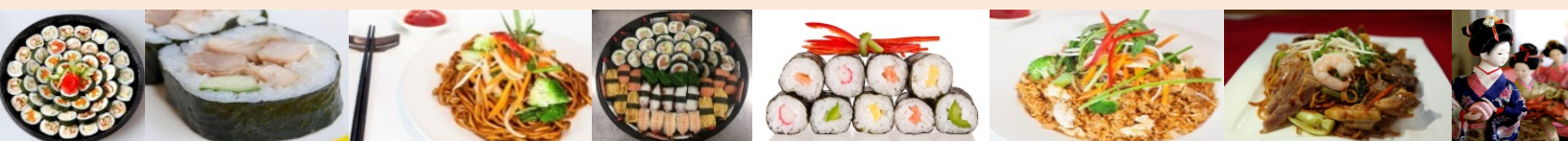
Crunchy Asia Salad - Regular & Large size

- Cooked Tuna
- TY Chicken
- Katsu Chicken
- Satay Chicken



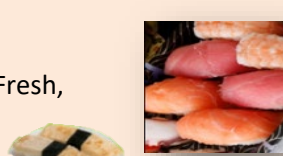
Japanese Bento Box

- Teriyaki Chicken
- Katsu Chicken



Nigiri Individual piece

- Tuna Fresh, Prawn Fresh, Octopus, Salmon Fresh, Gunkan Seaweed, Gunkan Flying Fish Roe, Egg-omelette, Inari (Fried Tofu Skin)



Nigiri Combo Pack

- Nigiri Mixed (5pcs)
- Maki & Nigiri Combo (6xMaki + 2xNigiri)
- Chicken Katsu Deluxe Combo (3 Katsu Chicken Maki + 2 Katsu Chicken Nigiri)
- Salmon Deluxe Combination (3 Smoked Salmon Maki + 2 Raw Salmon Nigiri)



Inari Nigiri piece: (Deep fried tofu skin outside)

- Cooked Tuna Inari Nigiri, Squid Salad Inari Nigiri, Seaweed Salad Inari Nigiri, Fish Roe Inari Nigiri



Inari Combo (3pcs)

- Cooked Tuna
- Teriyaki Chicken
- Vegetable Inari
- Combination Inari
- Seafood Inari



Traditional Vietnamese Rice Paper Roll

Standard (3pcs) Mini Per Piece

- Teriyaki Chicken (Gluten Free available)
- Fresh Prawn (Gluten Free available)
- Tofu
- Combination
- Cooked Tuna (Gluten Free available)
- Katsu Chicken
- Vegetable / Vegan Gluten Free
- Satay Chicken
- Avocado Gluten Free
- Teriyaki Beef
- Duck



Gourmet Paper Roll (3pcs)

- Teriyaki Chicken
- Fresh Prawn
- Tofu
- Egg Omelette
- Smoked Salmon



Hot Meals

Small 220g, Regular 310g, Large 500g & 1.5kg Tray

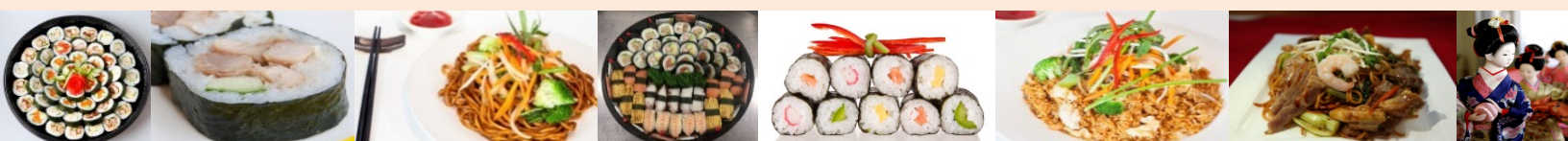
- Combo Fried Noodle, Vegetable Fried Noodle
- Combo Fried Rice, Vegetable Fried Rice
- Teriyaki Chicken / Beef Steam Rice
- Mild Japanese Curry Chicken Steam Rice
- Combo Thin Egg Noodle / Vegetable Thin Egg Noodle
- Katsu Chicken / Kara Chicken with Steamed Rice
- Minced Beef Noodle / Minced Beef with Steamed Rice - Large 395g, Reg. 300g
- Kung Pao Chicken with Steamed Rice & Peanuts or no peanuts
- Special Beef Brisket with Steamed Rice
- Chinese Style Pork mince with Noodle & Vegetabele



Sauce & Container

- Mini Wasabi (200 pieces)
- Soya Fish (500 pieces)
- Soya Fish Gluten Free (400 pieces)
- Mini Ginger (200 pieces)
- Wasabi Powder (1 kg)
- Ginger (1 kg)
- H2 (100 Pieces) (for mini rice paper roll)

- ST1 Body (50 pieces) (for 3 & 4 pieces sushi)
- ST1 Lid (50 pieces)
- ST2 Body (50 pieces) (for 5 & 6 pieces sushi)
- ST2 Lid (50 pieces)
- ST4 Body (50 pieces) (for 8 pieces sushi & rice paper roll)
- ST4 Lid (50 pieces)
- H3B (100pcs) (for 2 pieces sushi)



Trading as Sushi Master & DancinWok

Address: 12 Brolo Court, O' Connor WA 616

Post Address: PO Box 8040 Hilton WA 6163 / 12 Brolo Court, O' Connor WA 6163

Contact: Gloria 0415 797 590 / sales@sushimaster.com.au

Office Tel: 08 6310 0000 Fax: 08 9331 5000

